

Notes – CEDEN User Group Meeting

Date: September 17, 2015

Item No.	Item
1	<p><u>Welcome</u></p>
2	<p><u>Updates</u> <i>Brief overview of a couple of CEDEN related items.</i></p> <hr/> <p><u>Notes</u> The website has been updated with a number of changes</p> <ul style="list-style-type: none"> • The data change procedures discussed by the group are posted at http://ceden.org/procedures.shtml • The Submit Data steps at http://ceden.org/ceden_submitdata.shtml now contains a link to the data checker • A button to the user group page has been added to the CEDEN home page <p>The majority of the training tools discussed during the July meeting will be developed by a contractor, though we are moving forward with some of the items discussed, namely a subcommittee for improving vocabulary lookup values. This group is in the process of scheduling its first meeting.</p> <p>The input on the query tool improvements will be utilized when the CEDEN team considers the comprehensive updates to the system. Waiting to make big changes to the query tool seemed more efficient in terms of the technical process and the administrative process.</p>
3	<p><u>CEDEN to WQX Project</u> <i>Update of our grant project to connect CEDEN to EPA's Storet through the Water Quality Exchange (WQX).</i></p> <hr/> <p><u>Notes</u> Our contractor for this project, Windsor Solutions, is working on the draft mapping between CEDEN and WQX. A draft version of the mapping will be sent to the user group, for those that are interested, but it is not expected that you review or make comments on it. The mapping will not include the vocabulary cross-walking, only the field mapping. The vocabulary crosswalk will be an additional effort.</p> <p>Our approach is to build a datamart or warehouse that will pull data out of CEDEN. From there it will be mapped to the correct WXQ field.</p>
4	<p><u>CIWQS to CEDEN Connection</u> <i>Discussion on connecting the Water Board's California Integrated Water Quality System (CIWQS) to CEDEN. This will include a short overview of CIWQS and the proposed mapping.</i></p>

Item No.	Item
	<p data-bbox="175 258 256 289"><u>Notes</u></p> <p data-bbox="175 296 1453 541">The attached presentation on this project was given during the meeting. Then the group discussed the mapping between the two systems. The initial focus is mapping chemistry data. Because CIWQS only contains the equivalent of the “target” latitude and longitude, the data flow will not contain the data fields on the template’s “Location” tab. Project name can be some concatenation of fields and hard coded values, such as “eSMR_[Order Number],” though the exact formula needs additional discussion. Abbreviations will likely be needed in order to adhere to the character length requirements in CEDEN.</p> <p data-bbox="175 583 1323 653">The proposed mapping to the CEDEN templates and the proposed changes to the CIWQS Permittee Entry Template (PET) tool are also attached.</p>
5	<p data-bbox="175 699 310 730"><u>Wrap Up</u></p> <p data-bbox="175 737 609 768"><i>Next Meeting: October 15, 10 am</i></p>

CIWQS to CEDEN



Discussion

- Goal of Project
- Overview of CIWQS
- Submitting Data to CIWQS
- Proposed Changes to CIWQS
- Mapping



Goal of Project

- Make receiving water data submitted to the electronic Self Monitoring Reports (eSMR) module of the California Integrated Water Quality System (CIWQS) available through CEDEN
 - Want to make data available for assessment and other uses without requiring double submittal
 - Starting with Chemistry data



CIWQS

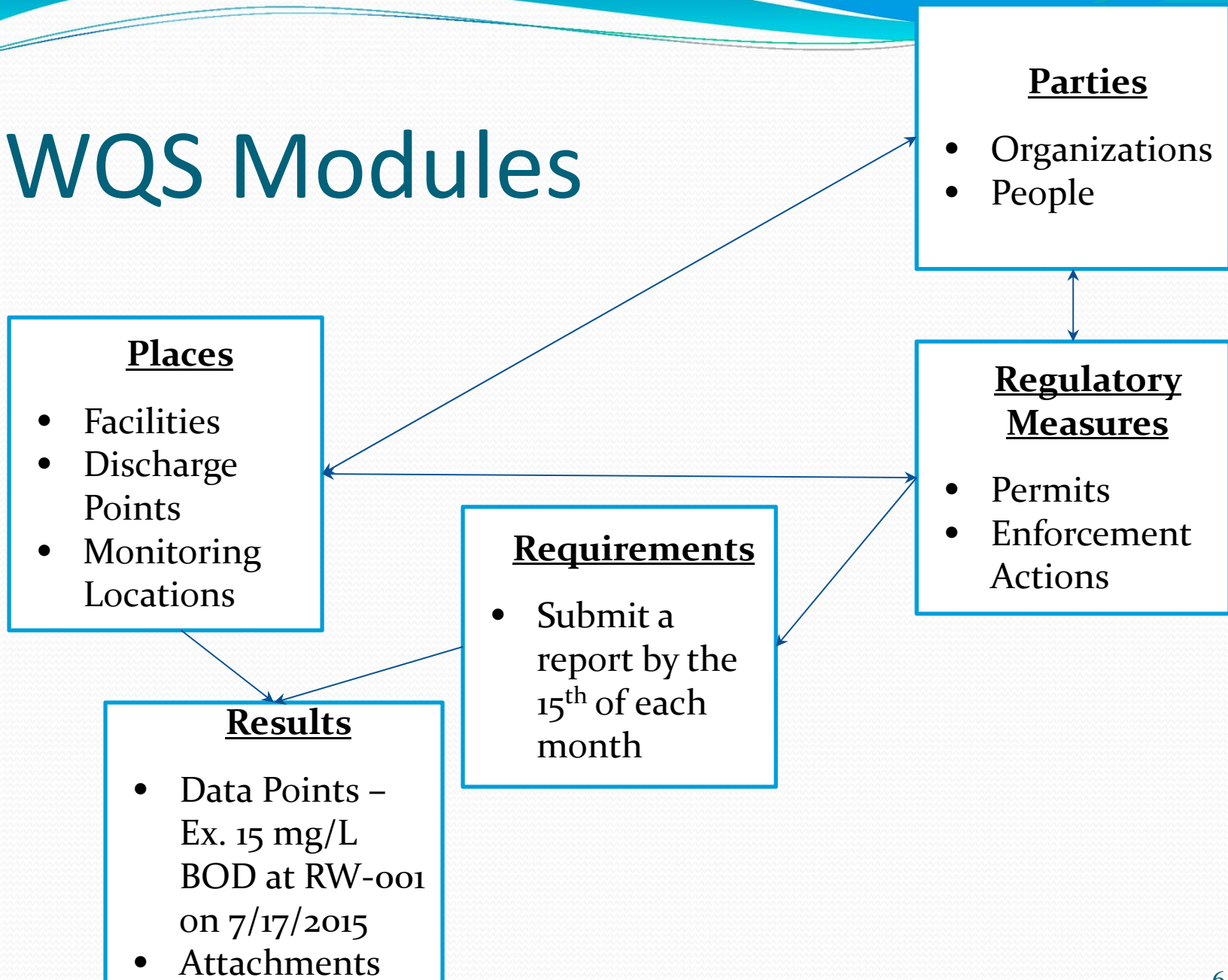
- Relational database
- Internet based
- Tracks regulatory information
 - National Pollutant Discharge Elimination System (NPDES)
 - Waste Discharge Requirements (WDRs)
 - Land Disposal
 - Irrigated Lands
 - Water Rights
- Receives electronic reports from dischargers
 - Sanitary Sewer Overflow Program (SSO)
 - eSMRs for NPDES dischargers



CIWQS Modules

- Modules
 - Parties
 - Places
 - Regulatory Measures
 - Inspections
 - Violations
 - SSO
 - eSMR
 - eWRIMS
 - Run Reports
- Users can make links describing relationships

CIWQS Modules





Data Points Submittal

- Permittee Entry Template (PET) Tool
- Manual Data Entry
- Comma Separated Value (CSV) file in correct format using correct vocabulary



Data Points Submittal

- Concentrating on PET Tool modifications and then working the same changes through to CIWQS and the CSV file
 - Will likely not modify the manual data entry pathway



Proposed PET Tool Modifications

Data Entry Tab

- Collection Depth, specifying feet
- Opening up Matrix
- Collection Method Code
- Sample Type Code
- Field Replicate
- Opening up Lab Replicate
- Lab Batch

New Lab Batch Tab

- Lab Batch
- Lab Agency Code (via ELAP#)
- Lab Submission Code
- Batch Verification Code
- Lab Batch Comments

General Tab

- QAPP Questions



Unresolved Issues

- Checker checks
- Add it to CEDEN database itself or datamart that feeds WQX and query tool

