

## Notes – CEDEN User Group Meeting

**Date:** July 16, 2015

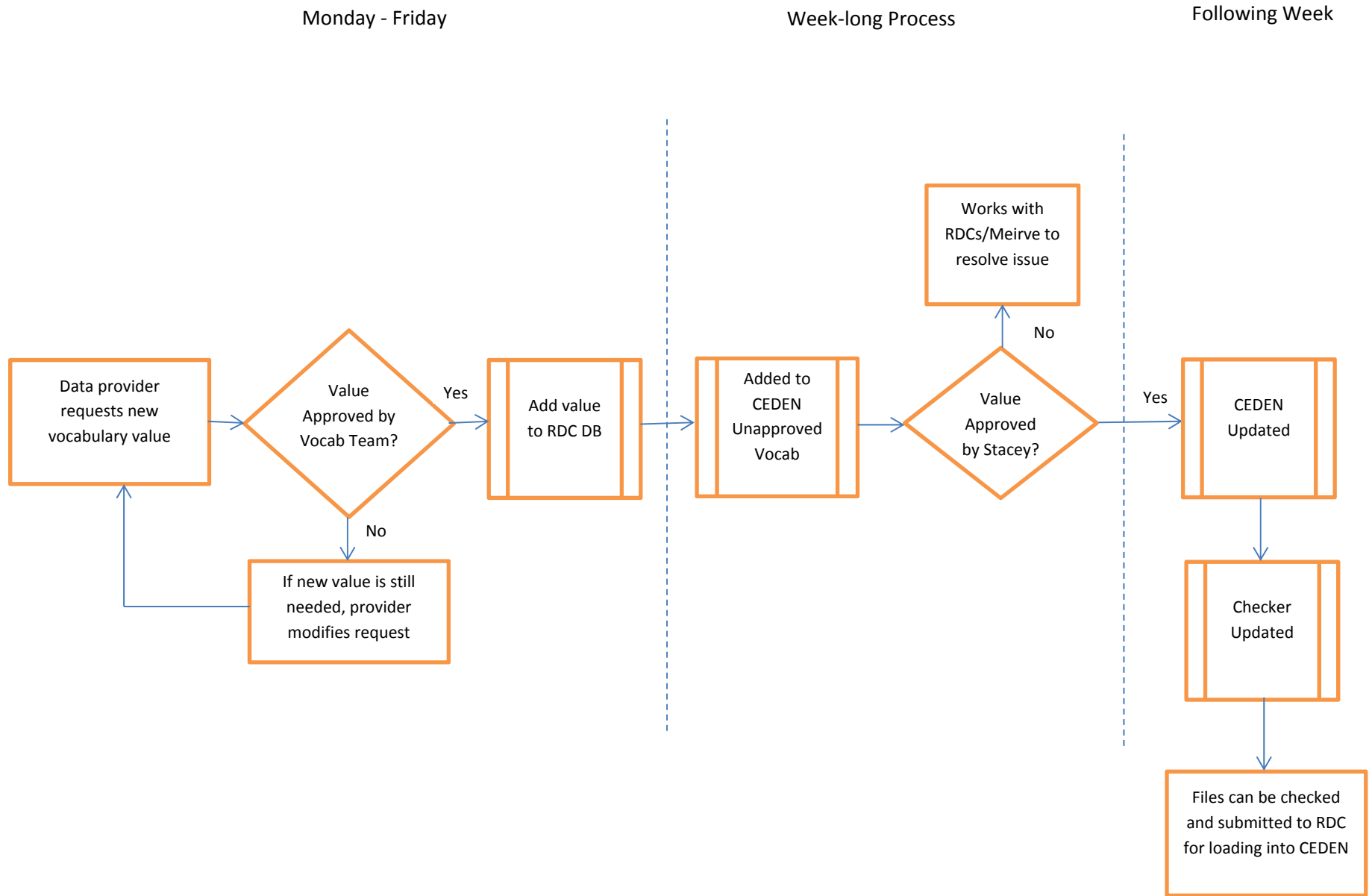
Item No.	Item
1	<b><u>Welcome</u></b>
	<b><u>Error Checker Status</u></b> <i>Discuss the implementation of the unified checker.</i>
2	<b><u>Error Checker Status Notes</u></b> Jarma reviewed a few key points about the error checker that is currently available on the CEDEN website. One of the points is that the timeline of new vocabulary being available through the checker is now longer. The attached diagram shows the process. Jarma asked for feedback on the impacts that the longer timeline may have.
3	<b><u>Data Changes Process – CEDEN Initiated</u></b> <i>There are times when lookup values are found to be incorrect or not as correct as they could be. In some cases, if the lookup values are modified, the data that use them could also be changed. Although we aren't proposing any changes at this time, this item is to discuss a process that should be followed in these cases. A draft process is attached.</i>
	<b><u>CEDEN Initiated Change Process Notes</u></b> The group reviewed the attached draft process for making changes to data that are initiated by the CEDEN Team. Please provide any comments on the draft process to <a href="mailto:ceden@waterboards.ca.gov">ceden@waterboards.ca.gov</a> before the next meeting.
4	<b><u>Data Changes Process – Data Provider Initiated</u></b> <i>There are times when data providers request changes to data already in CEDEN. In some cases it is easier to delete the data in question and reload it than make individual changes. Either way, it can be an expensive process. Additionally, changing data can impact data consumers. At the same time, we don't want incorrect data in the system. This item is to discuss a process to follow when data providers request changes to their data. A draft process and form are attached.</i>
	<b><u>Data Provider Initiated Change Process Notes</u></b> The group reviewed the attached draft process for making changes to data that are initiated by the data provider. Please provide any comments on the draft process to <a href="mailto:ceden@waterboards.ca.gov">ceden@waterboards.ca.gov</a> before the next meeting.
5	<b><u>Query Tool - Continued</u></b> <i>Continue discussion regarding a new query tool from the June meeting.</i>

Item No.	Item
	<p><b><u>Query Tool Notes</u></b>            Jarma showed the draft schedule for the CEDEN connection to WQX project. She will ask Windsor solutions to extend the date for finalizing the CEDEN/WQX crosswalk by a week to allow User Group participants to review the crosswalk.</p> <p>Many of the features that were suggested last meeting for querying out the data are not provided on the existing tools that the group looked at last time. Additionally, having a state query tool would give us greater ability to query data for 303(d) assessment and to satisfy other requests. We still may be able to leverage existing tools.</p> <p>The group went through the key features that were not reviewed during the last meeting. This list is attached. The group did not list out every expected query field, but those have also been added. Please provide comments (additions, modifications, support for specific features, etc.) to <a href="mailto:ceden@waterboards.ca.gov">ceden@waterboards.ca.gov</a>.</p>
6	<p><b><u>Wrap Up</u></b>  <i>Next Meeting: August 20, 10 am</i>  <i>Training</i></p>
	<p><b><u>Items for the future:</u></b>            Urban vs. non-urban flag for data input – (may be difficult because it is subjective)</p>

## Error Checker

- Available on State Board website
  - [http://ceden.org/CEDEN\\_checker/Checker/](http://ceden.org/CEDEN_checker/Checker/)
  - SCCWRP pointing to it
  
- Checks
  - Formats
    - Dates in date fields, number of characters, etc
  - Vocabulary
    - Points to CEDEN Lookup Values
  - Business Rules
  - Need additional checks
    - If files not adequately checked, won't be able to be loaded
    - Will be evaluating this as it is used more
  
- Finicky on Formats
  - Having trouble – clear formats
  - Will post a macro that converts from old templates to current templates
- When file passes, be sure to add the email address of your RDC contact to actually submit your file
- Vocabulary Process

# Vocabulary Approval Process



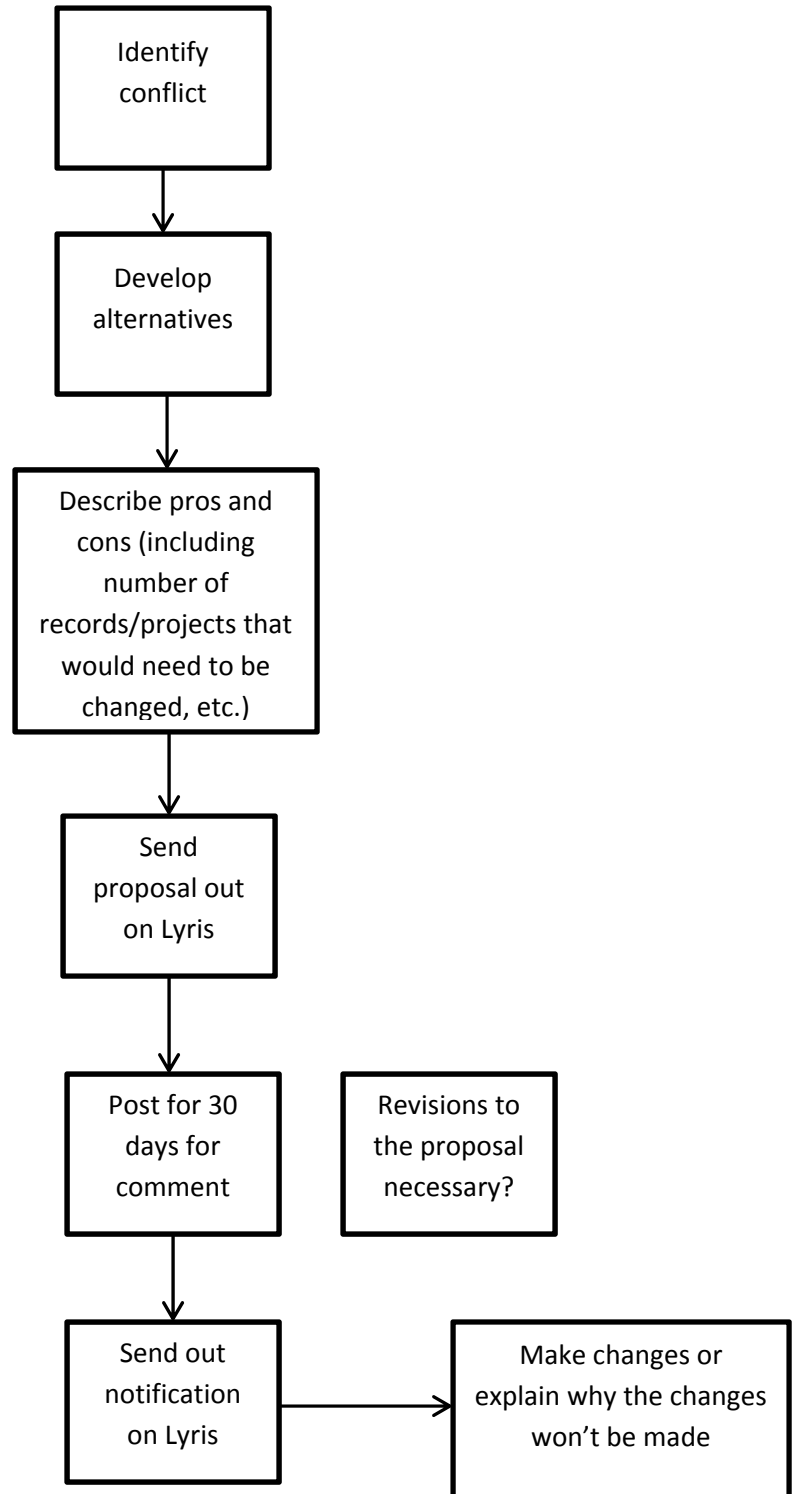
July 16, 2015

## Updating Already Submitted Data by CEDEN Team

(This process does not pertain to changes to taxonomic)

### Items to consider:

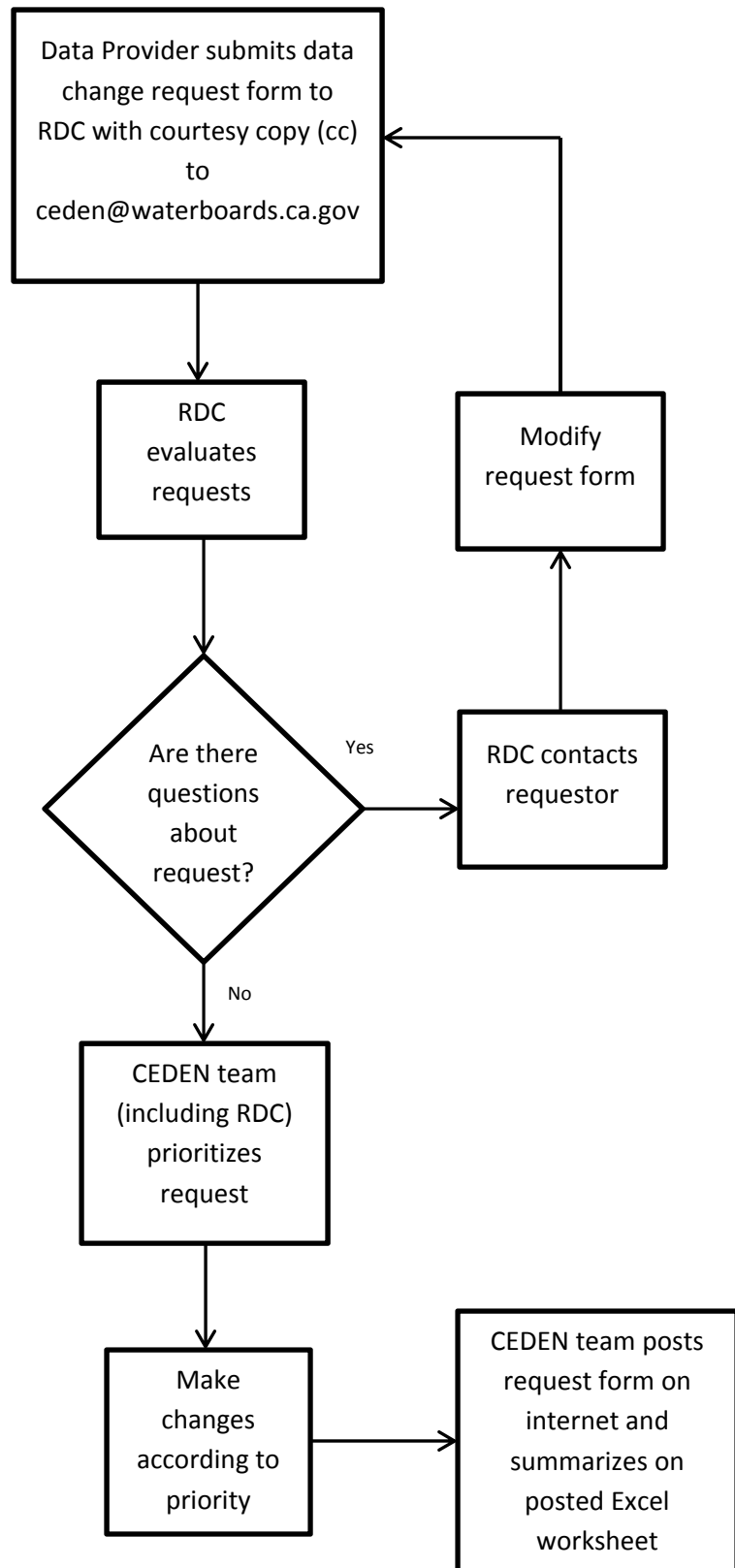
1. In some cases, it isn't clear how existing data should be treated and it may be necessary to contact data providers. Contacting data providers is resource intensive and often not successful because of turn-over and lack of resources to research old data. Concurrence with data provider may not be possible
2. Modifications to values makes comparison over time difficult



## Updating Already Submitted Data by Data Provider

*Items to consider:*

- 1. In some cases it will be easier to remove all of the data and reload the corrected data*
- 2.*



## Data Modification Request Form

Email completed form to RDC that loaded the data and to [ceden@waterboards.ca.gov](mailto:ceden@waterboards.ca.gov)

Requestor	
Relationship to Data	
Email Address	
Date of Request	
Project Name	
Summary of Changes	

Specific Description of Change (Include data range, station codes, items that need to be changed, etc.. You may also attach an Excel file of the data set that needs changes, being clear on what needs to be changed.):

Potential Consequences if Changes are Not Made

*CEDEN Team use only*

Date change made to RDC database:

Staff that made the change to RDC database:

Time required to make modifications (including re-loading data if needed):

Data modification number:

## Query Scenarios

User	Searching For*?	Comment/Note
Data Provider	Wants to see data uploaded by that provider (agency, project, or station search)	Likely too many projects to list in a drop down, would this be a free text feel with an implicit wild card search (for example, “sa” would return (San Francisco, Sacramento, Colusa, etc.)?)
Water Board Staff	Specific analyte(s) or analyte group	
	Specific geographic location	Current geographic filters are not required fields but “calculated”  Ability to show basic land use layers to give context to the sites being selected (Dave suggested NHD+v2)
	Specific water body	Water body isn’t required; could use lat/long and assumptions?  Recognize that there are different lists of waterbodies
	Specific water body type	
	Specific region	
	county	
	Polygon (drawn by user)	
	Select a watershed by identifying a pour point	
General Public	Hydrologic unit	
	Specific geographic location – including being able to type in an address	Further discuss what happens after the tool zooms into the address provided (auto select what is shown within the window, allow the user to use a polygon drawing tool, etc)
	Specific water body	
Other Agency	Specific program	
	Specific analyte or analyte group	Allow to search by analyte name
Research	Specific program	
	Specific analyte or analyte group	
	matrix	

\*All with a time component

-Ability to search on urban vs. non-urban collection site (this was specifically brought up in regards to pesticides but could also be helpful for benthic data and other items as well). [Could be an input flag or a product of a visualization tool considering land use and population density; would need to consider ability to track changes over time or not track changes over time (i.e. users see what it was at the time of collection) because what is rural now may not be rural in ten years.]



## Query Tool Features

- User summary before generating output
- Ability to refine search based on summary and refine search based on summary
- Multi-select search criteria
- Multiple output formats (Excel, text, html, zip)
- Email functionality for large sets of results
- Cascading search criteria (i.e. only show analytes that were monitored for at the stations selected, if certain stations were specified)
- Map
  - Show stations on base map
  - Select area on map
- Ability to include or exclude QA samples
- Consistent naming between loading, filtering, and viewing
- Date range filters
- Matrix filter with default of sample water
- selection
- Filters
  - Date range
  - Matrix with default of sample water
  - County/region/watershed
  - Program
  - Project
  - Parameter
  - Parameter group
  - Station
  - Species (tissue)
  - Organism (benthic)
  - Organism Group (benthic)