



CEDEN

CALIFORNIA ENVIRONMENTAL DATA EXCHANGE NETWORK

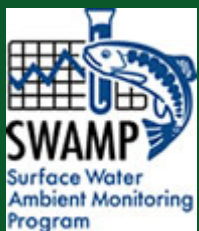


*** August 24, 2010 ***

Regional Data Centers



CEDEN Partners



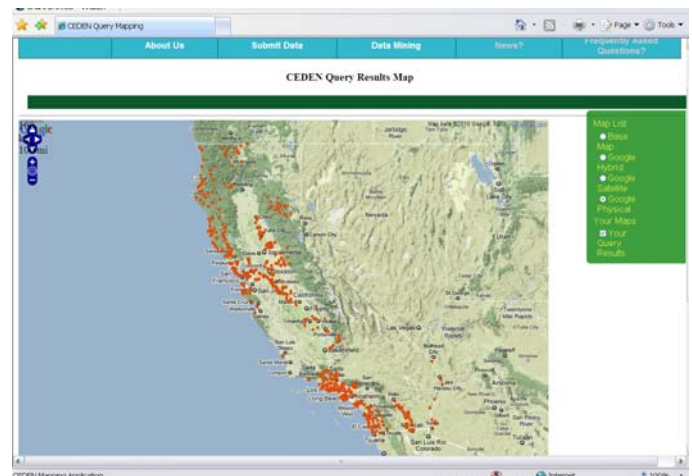
The California Environmental Data Exchange Network (CEDEN) is a system designed to facilitate integration and sharing of data collected by many different participants involved in the water and environmental resources of the State of California. This network is open to federal, state, county and private organizations. The purpose of the CEDEN network is to allow the exchange and integration of water and environmental data between groups and to make it accessible to the public.

Our Mission is to simplify and improve access to California's water resource monitoring data by providing services that integrate, standardize and display data from the State's many diverse monitoring and data management efforts.

The goal of CEDEN is:

- To incorporate many diverse data sources into a standardized integrated data sharing network. (Data sources include stormwater, agricultural waiver, and surface water ambient monitoring data, available through the Regional Data Centers (RDC));
- To provide direct public access to monitoring data in an easily downloadable form; and
- To support question-driven information themes through the California Water Quality Monitoring Council's [My Water Quality](#) web portals.

Access to data is one primary resource CEDEN provides. The CEDEN RDCs work as a team to provide data expeditiously and in a user-friendly, error-free format. In addition, metadata is available to communicate collection and analysis methods, and the nature and quality of the data. Users can download data using either the simple or advanced query tool, both of which feature mapping capabilities. CEDEN also features a data catalog that includes detailed information on data from large-scale projects in California. The data catalog includes links to interpretive reports and overviews of projects.





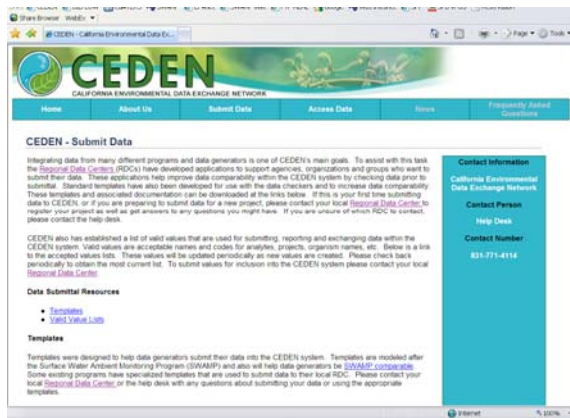
CEDEN

CALIFORNIA ENVIRONMENTAL DATA EXCHANGE NETWORK



Data collection and analysis tools that convert CEDEN data into information will be developed for users who need to analyze ambient monitoring data. Examples of analysis tools are interactive graphs and charts which compare data to water quality thresholds of interest.

Integrating data from many different programs and data generators is one of CEDEN's main goals. The RDCs have developed applications to support agencies, organizations and groups who want to submit their data.. These applications help improve data comparability within the CEDEN system by checking data prior to submittal.



Standard templates which are also publicly available for download increase data comparability within the CEDEN network. Users interested in submitting data should contact their local RDC to register projects. If you are unsure of which RDC to contact, please contact the help desk at (831) 771-4114.